



XVII BEAU. COMMON FLOWS

COORDINATION

Antonio Antequera Reviriego

TECHNICAL SUPPORT

Cristina Asla, Macarena Chaves, Ana Lahoz

VISUAL IDENTITY AND GRAPHIC DESIGN

Santanasantana

WEB DEVELOPMENT

Aurora Saseta

PHOTOGRAPHY

Ana Amado
Juan Baraja
Sara Cuervo
Pablo Miranzo
Catara Rego

Iñaki Carnicero Alonso-Colmenares
Secretary General of Urban Agenda, Housing and Architecture

Marta Vall-Llossera Ferran
Chair
Higher Council of Spanish Architects' Associations (CSCAE)

Daniel Rincón de la Vega
Trustee
Fundación Arquia

Ander Bados, Miguel Ramón
Curators 17th BEAU

Ginés Garrido, Belinda Tato, Mauricio Rocha, Sandra Barclays, Josep Ferrando, Ane Arce, Óscar Fuertes, Betsaida Curto
Members of the jury

Evelyn Alonso, Sana Frini, Pablo Ibañez, Guiomar Martín, Jesús Vassallo
Members of the jury

Dana Barale, Andrea Bardón, Susana López, Pía Mendaro
Members of the jury

CONVENES



ORGANIZES



www.labienal.es



From 11 December to 15 March
La Térmica Cultural
Calle de la Energía, 2
24404 Ponferrada, León

Exhibition hours:
Thursdays and Sundays, from 10 am to 4 pm
Fridays and Saturdays, from 10 am to 10 pm

NIPO: 179-25-046-6



COMMON FLOWS
RESPONSE TO A HYPERCONNECTED TERRITORY XVII BEAU WWW.LABIENAL.ES

RESPONSE TO

HYPERCONNECTED TERRITORY

17TH SPANISH ARCHITECTURE AND URBANISM BIENNIAL PONFERRADA 2025

17TH SPANISH

ARCHITECTURE AND

URBANISM

BIENNIAL

COMMON FLOWS
RESPONSE TO A HYPERCONNECTED TERRITORY PONFERRADA



Common Flows invites us to consider architecture from a shifting present day, a time when everything is circulating at breakneck speed. In the face of this immediacy, networks, and continuous movement, architecture – a discipline historically associated with permanence – must learn to coexist with the instability of the contemporary world, to interpret the flows that shape the territory and our daily lives.

The curatorial project is organized into five flows or thematic axes – materials, energy, data, people, and the environment – that form a map of relationships with the capacity to reveal the invisible networks that underlie our reality. In all of them, architecture emerges as a critical mediator with the capacity to translate the abstraction of global systems into concrete, sensitive, and shared places and situations.

The exhibition is designed as a material translation of this reflection. Forty identical supports form a constellation of devices in which the content becomes the main focus. Inside, a combination of projects, publications, and ad hoc research lets visitors read the exhibition not only as a collection of finished works, but as a series of questions and answers; thus, visitors will not only learn about the award-winning architecture but about all the challenges facing the discipline today.

Common Flows is designed as a space for observation and a pause in the movement, a place where architecture, drawing on an awareness of its interdependence, can try out new ways of inhabiting a world that is always flowing.

COMMUNICATION AND PUBLICATIONS

- ANALOGUE IMAGES
Guillermo Fernández-Abascal, Urtzi Grau y Janelle Woo
- CRITICAL ESSAYS
Colección DPA - ETSAM
- ARCHITECTURE OF SOLITUDE
Rosana Rubio y Fernando Nieto
- COMPUTATIONAL COMPOST
Marina Otero en colaboración con Donostia International Physics Center
- FUNCTIONALISM AND ARCHITECTURE
Fernando Quesada López
- TIME MATTERS
Urszula Kominska y Nacho Ruiz Allen
- AGAINST THE COMMONS: A RADICAL HISTORY OF URBANISM
Álvaro Sevilla Buitrago
- GREEN AWNING: POSTCARDS OF A DIFFERENT HERITAGE
Pablo Arboleda y Kike Carbajal
- AUTOMATED LANDSCAPES
Merve Badir, Ludo Groen, Marten Kuijpers, Victor Muñoz y Marina Otero
- NEW TOWNS: PERSPECTIVES ON AN INVENTED LANDSCAPE
Ana Amado y Andrés Patiño
- THE MATERIALITY OF AIR: ESSAYS ON ARCHITECTURE AND ART
Rafael Beneytez-Durán
- FUTURE MADRID
Javier García-Germán, Alejandro Valdívieso, equipo.exe
- HOUSING IN THE BARCELONA METROPOLITAN AREA:
IMPSOL, 2014-2025
Marta Poch, IMPSOL
- ARCHAEOLOGIES OF THE PRESENT
FIVE RE-IMAGININGS OF OUR BUILT HERITAGE
FFF collective
- GROUP TRACES
Jaime Gutiérrez, Andrea Aguilera e Itziar Molinero



STABILIZATION OF THE SYSTEM OF MAN-MADE CAVES
José Antonio Aguado, Javier Vellés y Juan Alonso



RANDOM STACK
Víctor Muñoz Sanz + Juan Baraja



30 SOCIAL HOUSING UNITS
DATAAE + Xavier Vendrell studio



RENATURALIZATION OF THE EDGE OF THE BEACH
CREUS&CARRASCO + RVR Arquitectos



VALL D'HEBRON RESEARCH CENTRE
BAAS arquitectura + Espinet/Ubach arquitecte



TRANSITION AND GRAVITY
Manuel Bouzas y Roi Salguero + Sara Cuervo



FEEDING THE IMAGINATION
Clara Olóriz Sanjuán + Catara Rego



ANYTHING FOR THE HOMETLAND
Antonio Giráldez y Sebastian Lambert + Ana Amado



CAN GABRIEL
TED'A arquitectes



THE ROAD TO THE OIL MILL
Carpe Estudio + PlanoPlano Estudio + Miguel Hernández



THE CONSTRUCTION OF THE SEA-FRONT AS A SUPPORT
David García-Louzao + Catara Rego



FORESTA IGNITIA
Pareid + Sara Cuervo



RESOURCE MAP / EVPP IN SANTA EUGÈNIA
Carles Oliver + Xim Moyà



WILD WATERFALLS, FLOWERS AND CROWS
Elisa Gallego + Catara Rego



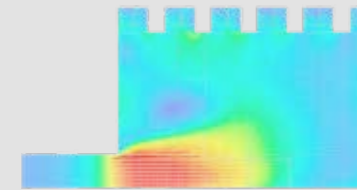
REHABILITATION OF THE VAPOR CORTÉS. PRODIS 1923
H ARQUITECTES



PARADOXES
Óscar Miguel Ares + Ana Amado



INHABITING THE FLOODPLAIN: CULTIVATING THE CITY
Juan Carlos Bamba e Ignacio de Teresa + Ana Amado



INTERMEDIATE FLOWS
Javier de Andrés + Societat Orgànica



REHABILITATION OF PUBLIC SPACE IN NEBRA
Carlos Seoane



THE STRATEGIC POWER OF THE VOID
nUNDO + Catara Rego



FIREFIGHTERS' TRAINING TOWER IN VALL D'HEBRON
Carles Enrich Studio



SOLAR PERIPHERIES
Pablo Castillo Luna + Sara Cuervo



ECOLOGICAL THERMAL POWER PLANT
FRPO Rodríguez & Oriol estudio



CASA ID Y TALLER GRAU
rellam | architecture



COAL: FROM EXTRACTION TO ATTRACTION
longo + roldan + Ana Amado



REGENERATING BARCELONA REARQ [UPC] + GICITED [UPC] + Constraula - Sorigué



KEEPERS OF INFORMATION
rellam + Olivier Campagne + Pablo Miranzo



GREENH@USE: 140 SOCIAL HOUSING UNITS FOR RENT
Marta Peris, José Toral + Jaime Pastor



OBJECTUAL MULTIPLICITY
Bajet Giramé + Juan Baraja



TOWN HALL IN VALVERDE DE CAMPOS
Óscar Miguel Ares



102 SOCIAL HOUSING UNITS IN MADRID
MARMOLBRAVO + MADhel



MASCARADA
Elearkitektura + Pablo Miranzo



MEDITERRANEAN GARDENS IN LA HOYA
Kauh Arquitectos



THE CLOUD BUBBLE
TunubeseCamiró, Marina Otero, Ana Robles, Paco Tébuí, Pablo Jiménez + Pablo Miranzo



FROM WASTE TO RESOURCE
PARABASE + Juan Baraja



CRAQUELURES DANS LE RÉEL EN LAUSANA
KRI + PALMA + MOFA + KOIZ + IIOIO



REHABILITATION OF A MULTIPURPOSE AND CULTURAL SPACE
Camps Felip Arquitecturia



WALDORF SCHOOL IN NAIROBI
Urko Sánchez Architects



THE HUMAN IMPACT ON THE SOIL
Montserrat Bonvehí + Seth Denizen